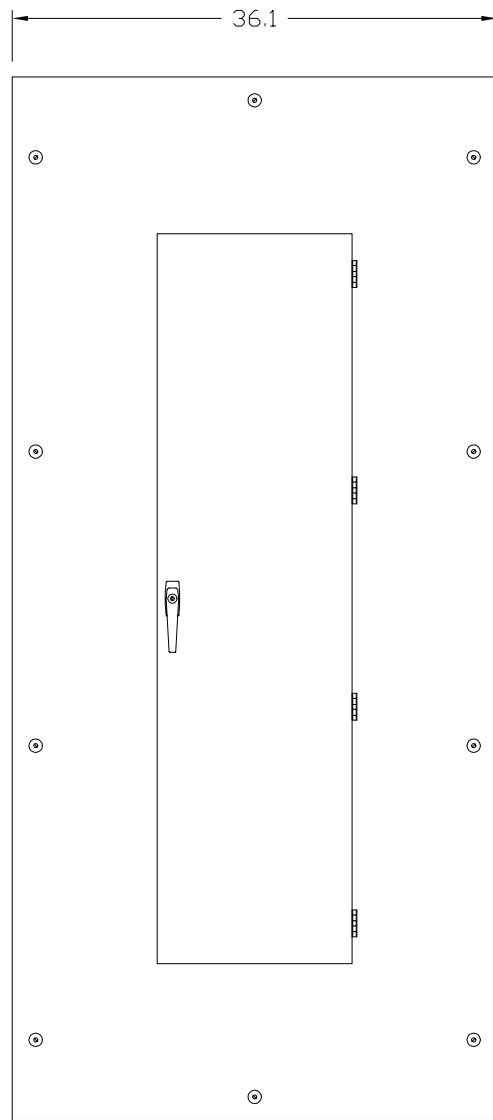
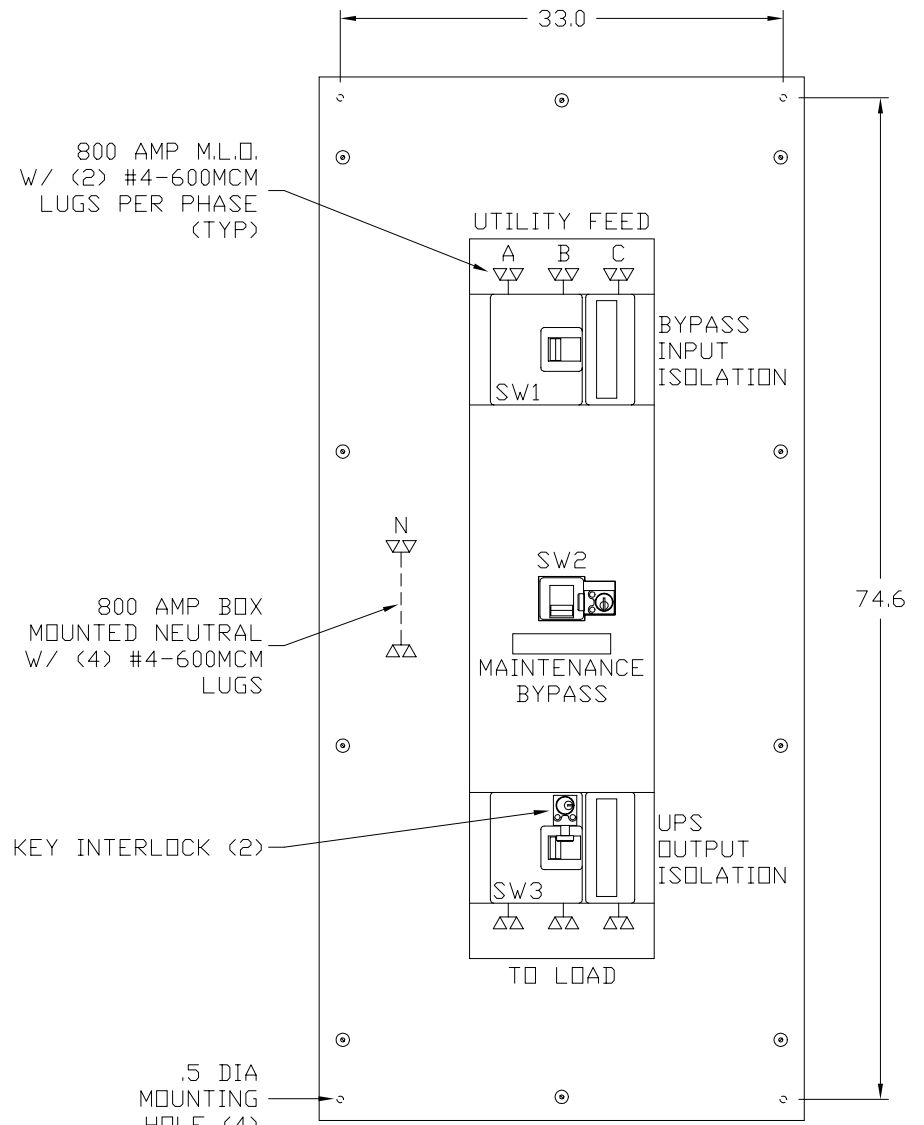


LEFT SIDE VIEW



FRONT VIEW



FRONT VIEW
DOOR REMOVED

This Document Contains Proprietary and Confidential Information.
Duplication, reproduction or use of this document or its contents in any form
other than as expressly permitted by Kinney Electrical Mfg. Co., is prohibited.

MITSUBISHI ELECTRIC
VERNON HILLS, ILLINOIS

REVISIONS

1 REV. LABELS 10-23-00

PART NO.: SEE TABLE

DESCRIPTION: 3 BREAKER MBP PANEL - 800 AMP MAX. W/ KEY INTERLOCK

MEAU APPROVED: *JMA*

KINNEY APPROVED: *RFM*

REV.: 1

DATE: 1-24-2000

CAD FILE:

DRAWING NO.:

SHEET:

DRAWN BY: RFM

MBWXXXX0800A04

M0000119

1 OF 2

3 BREAKER MAINTENANCE BYPASS PANEL (MBP) 400-800 AMPERES

PART NUMBER:

WB973-X X X-800-208K

A.I.C. RATING OPTION

ACCESSORY OPTION 1

ACCESSORY OPTION 2

A.I.C. RATING CODES:

H - HIGH INTERRUPTING

ACCESSORY CODES:

- 1 - 1a/1b AUXILIARY SWITCH
- 2 - 2a/2b AUXILIARY SWITCH
- 3 - 24VDC UNDER VOLTAGE RELEASE
- 4 - 1m/1b ALARM/LOCKOUT SWITCH
- 5 - 1a/1b AUXILIARY & 1m/1b ALARM SWITCH

NOTES:

- 1. ACCESSORIES NORMALLY INSTALLED ON SW2.
- 2. PUT LOWEST CODE IN OPTION 1, i.e. 12, 24.

PART NUMBER	UPS SERIES	KVA	BREAKER TYPE	AMPERES	SERVICE	A. I. C. RATING
WB973-CDP-800-208K	9700/9800	225	MDL	800	208/120V	65,000
WB973-CDP-800-480K	9700/9800	500	MDL	800	480/277V	50,000

A. I. C. RATING	208/120V	RATING CODE	480/277V	RATING CODE
65,000	MDL	--	HMDL	H
100,000	HMDL	H	--	--

KINNEY PANEL TYPE: CDP (UL 67 LISTED INTERIOR)

SERVICE: SEE TABLE ABOVE.

ENCLOSURE: NEMA 1 (UL 50 LISTED ENCLOSURE)

BOX: 12 GAUGE PAINTED STEEL, NO KNOCKOUTS.

TRIM: 12 GAUGE PAINTED STEEL, HELD TO BOX WITH ADJUSTABLE TRIM CLAMPS - SURFACE MOUNTING.

DOOR: EQUIPPED WITH ONE 3 X 5 DIRECTORY CARDHOLDER AND CORBIN 15767 SNAPLOCK.

FINISH: MITSUBISHI BEIGE POLYESTER POWDERCOAT APPLIED TO SURFACES TREATED WITH AN IRON PHOSPHATE AND CHROME FREE SEALER.

BUS: ELECTROLYTIC COPPER OF 98% CONDUCTIVITY, BASED ON 1000 AMPS PER SQUARE INCH DENSITY.

WIRE BENDING GUTTER: MEETS OR EXCEEDS NEC TABLES 373-6(a), 373-6(b).

BREAKERS: WESTINGHOUSE THERMAL-MAGNETIC, 800 AMP FRAME, 3 POLE, TRIP AS INDICATED: SEE TABLE ABOVE FOR BREAKER TYPE, AMPERES, AND A. I. C. RATING.

BREAKER TERMINAL LUG: (2) 500-750MCM PER PHASE.

KEY INTERLOCK: KIRK TYPE F, BREAKERS ARE INTERLOCK SO AT LEAST ONE BREAKER IS ON AT ANY GIVEN TIME.

This Document Contains Proprietary and Confidential Information.
Duplication, reproduction or use of this document or its contents in any form other than as expressly permitted by Kinney Electrical Mfg. Co., is prohibited.

MITSUBISHI ELECTRIC
VERNON HILLS, ILLINOIS

REVISIONS			PART NO.: SEE TABLE		
1	ADDED 500KVA P/N 10-23-00		DESCRIPTION: 3 BREAKER MBP PANEL - 800 AMP MAX. W/ KEY INTERLOCK		
			MEAU APPROVED: <i>Jma</i>	KINNEY APPROVED: <i>RFM</i>	REV.: 1
			DATE: 1-24-2000	CAD FILE:	DRAWING NO.: SHEET:
			DRAWN BY: RFM	MBWXXX0800A04	M0000119 2 OF 2