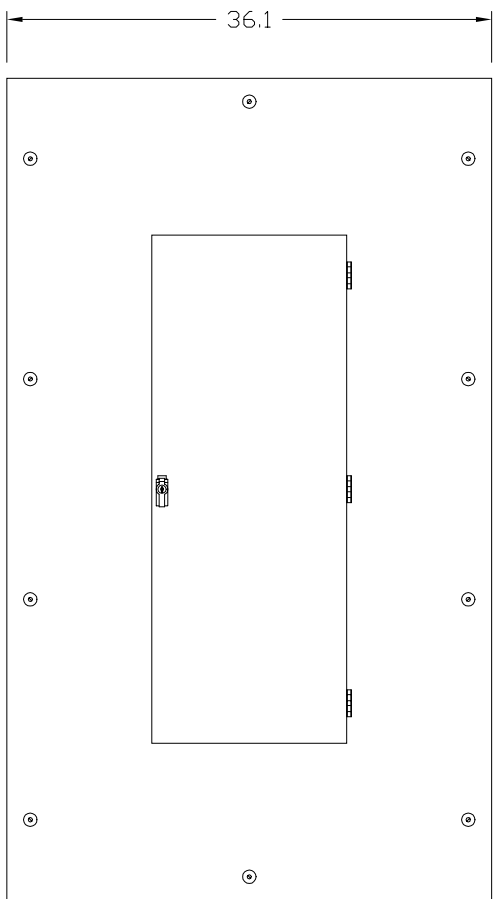
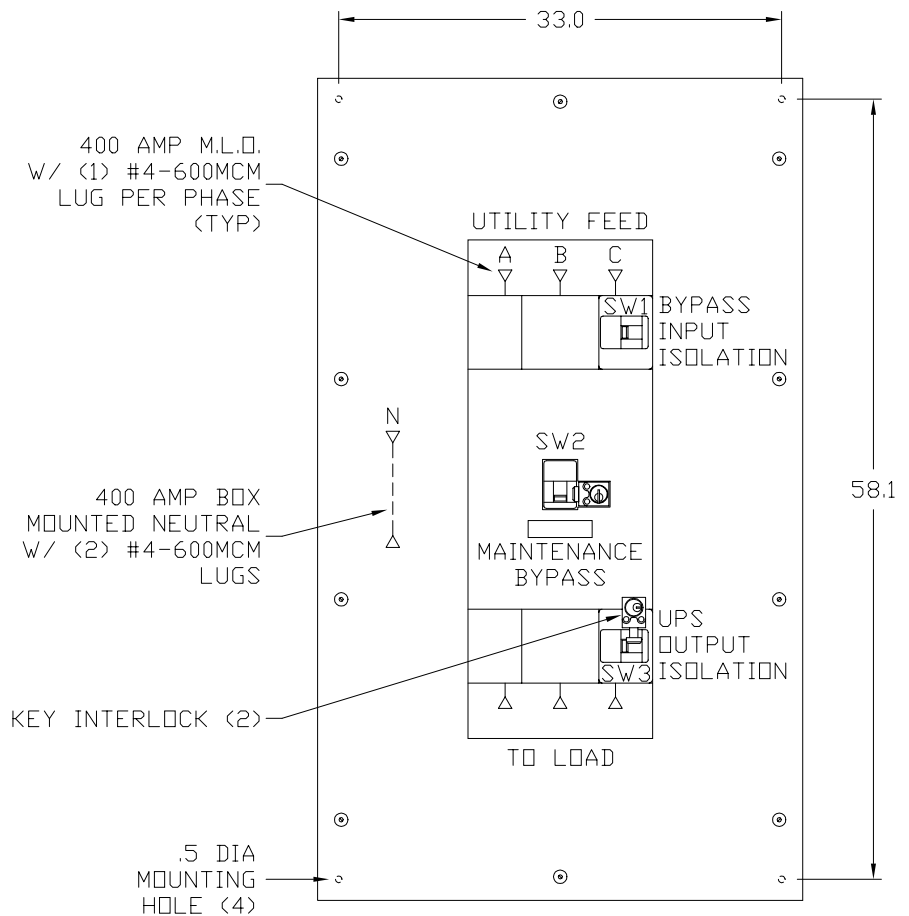


LEFT SIDE VIEW



FRONT VIEW



FRONT VIEW  
DOOR REMOVED

This Document Contains Proprietary and Confidential Information. Duplication, reproduction or use of this document or its contents in any form other than as expressly permitted by Kinney Electrical Mfg. Co., is prohibited.

MITSUBISHI ELECTRIC  
VERNON HILLS, ILLINOIS

REVISIONS	
1	REV. LABELS 10-23-00

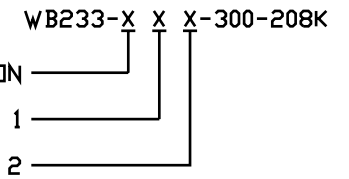
PART NO.: SEE TABLE	
DESCRIPTION: 3 BREAKER MBP PANEL - 400 AMP MAX. W/ KEY INTERLOCK	
MEAU APPROVED: <i>Jma</i>	KINNEY APPROVED: <i>RFM</i>
DATE: 1-24-2000	REV.: 1
DRAWN BY: RFM	CAD FILE: MBWXXXX0400A04
	DRAWING NO.: M0000111
	SHEET: 1 OF 2

**3 BREAKER MAINTENANCE BYPASS PANEL (MBP) 100-400 AMPERES**

PART NUMBER	UPS SERIES	KVA	BREAKER TYPE	AMPERES	SERVICE	A. I. C. RATING
WB233-CDP-300-208K	2033A	75	KD	300	208/120V	65,000
WB973-CDP-350-208K	9700/9800	100	KD	350	208/120V	65,000
WB973-CDP-350-480K	9700/9800	225	KD	350	480/277V	35,000
WB973-CDP-300-600K	9700/9800	225	KD	300	600V	25,000
WB973-CDP-400-600K	9700/9800	300	KD	400	600V	25,000

A. I. C. RATING	208/120V	RATING CODE	480/277V	RATING CODE	600V	RATING CODE
35,000	--	--	KD	--	HKD	H
50,000	--	--	--	--	KDC	U
65,000	KD	--	HKD	H	--	--
100,000	HKD	H	KDC	U	--	--
200,000	KDC	U	--	--	--	--

PART NUMBER:



A.I.C. RATING OPTION

ACCESSORY OPTION 1

ACCESSORY OPTION 2

A.I.C. RATING CODES:

- H - HIGH INTERRUPTING
- U - ULTRA HIGH INTERRUPTING

ACCESSORY CODES:

- 1 - 1a/1b AUXILIARY SWITCH
- 2 - 2a/2b AUXILIARY SWITCH
- 3 - 24VDC UNDER VOLTAGE RELEASE
- 4 - 1m/1b ALARM/LOCKOUT SWITCH
- 5 - 1a/1b AUXILIARY & 1m/1b ALARM SWITCH

NOTES:

- 1. ACCESSORIES NORMALLY INSTALLED ON SW2.
- 2. PUT LOWEST CODE IN OPTION 1, i.e. 12, 24.

ANY GIVEN TIME.

ERLOCKED SO AT LEAST ONE BREAKER IS ON AT